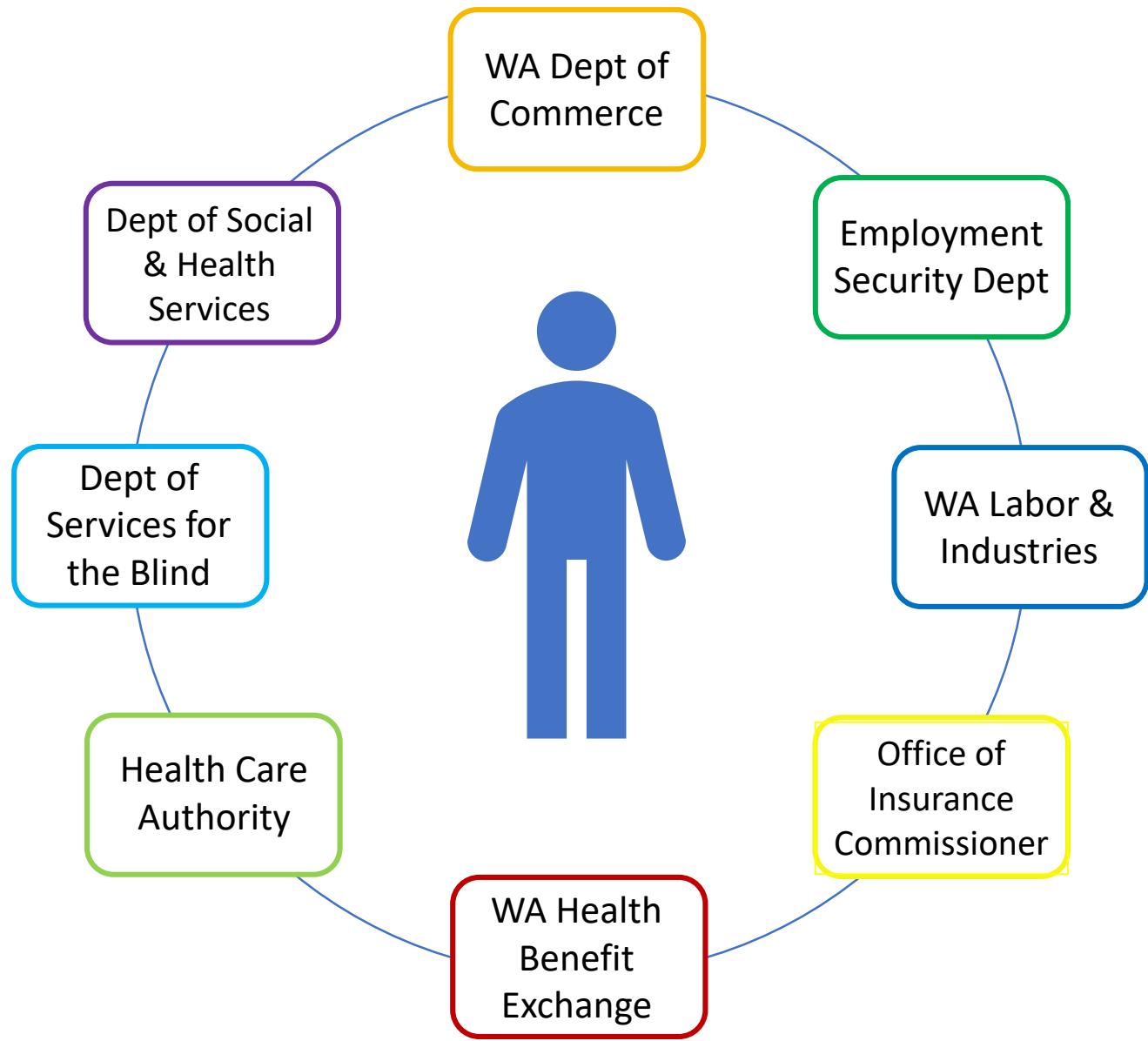
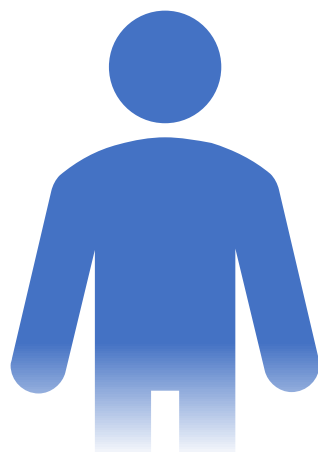


State Systems Overview





WA Dept of
Commerce



Washington State Department of Commerce

Lead state agency charged with enhancing and promoting sustainable community and economic vitality in WA.

- [Developmental Disabilities Endowment Trust Fund](#)
- [Achieving a Better Life Experience \(ABLE\)](#)
- [Housing and Essential Needs \(HEN \\$\)*](#)
- [WorkFirst \(TANF\)](#)

*Dept of Commerce approves the funding but does not manage the program

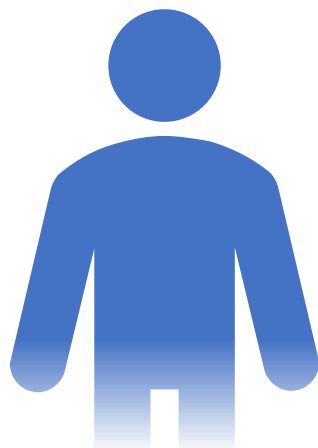


DDETf and ABLE



Cross Agency
Desk Aid

Employment
Security Dept



- [Unemployment Benefits](#)
- [Paid Family and Medical Leave](#)
- Jobs and Training – [WorkSource](#)
- Labor Market Analysis



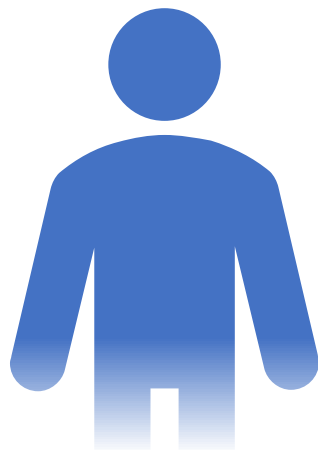
Unemployment and L&I



Cross Agency
Desk Aid



WA Labor &
Industries



Washington State Department of Labor & Industries

- Workplace Safety and Health
- [Workers' Compensation Insurance \(L&I\)](#)
SSA Offset Rules. (Worker's Comp is typically reduced with temporary or permanent disability.)
 - [L&I info](#)
 - [SSA info](#)
- Workers Rights
 - [Minimum wage in WA](#)
 - [Equal Pay and Opportunities](#)



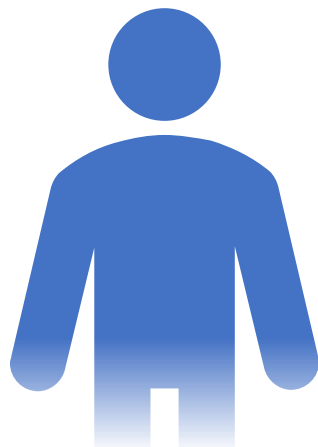
Unemployment and L&I



Cross Agency
Desk Aid



Office of
Insurance
Commissioner



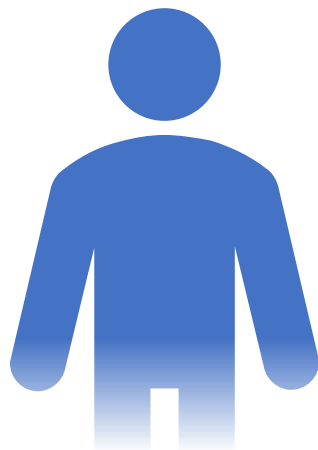
- Insurance requirements and guidance
- Medicare-related support
 - [Statewide Health Insurance Benefit Advisors \(SHIBA\)](#)
 - [Medicare Advantage Plans in WA, by County](#)



Cross Agency
Desk Aid



WA Health
Benefit
Exchange



washington

health**benefit**exchange

powering washington healthplanfinder

- [Healthplanfinder](#): Access point for healthcare coverage
 - MAGI
 - Health insurance marketplace
- Navigators
- [Tribal Health Programs](#)



Cross Agency
Desk Aid





Health Care
Authority

Washington State Health Care Authority

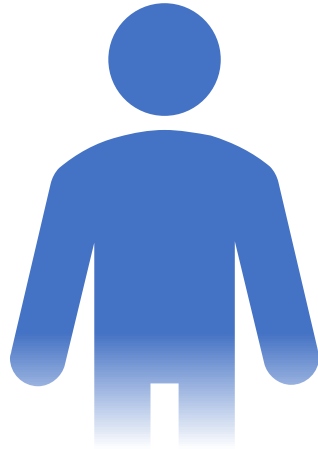
- Medical Oversight
 - Identified State Medicaid Agency
 - Apple Health Coordination
 - [Apple Health Eligibility Manual](#)
- ProviderOne
 - Online payment system for health care providers serving individuals enrolled in Apple Health.
- [Premium Payment Program](#)
- [Behavioral Health and Recovery](#)
- Foster Care



Cross Agency
Desk Aid



Health Care
Authority



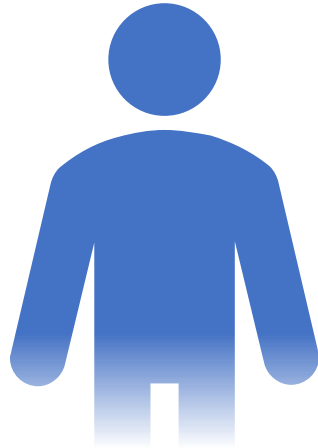
Washington State Health Care Authority

Assignment:

List five resources that are excludable when determining eligibility for SSI-Related medical.

- Conduct your research using the [Apple Health Eligibility Manual](#)
- Come prepared to talk about your experience and what you learned at the next training.

Dept of
Services for
the Blind



Washington State
DEPARTMENT OF SERVICES FOR THE BLIND

Provides “one front door” for people of all ages who are blind or have low vision in WA.

Services include:

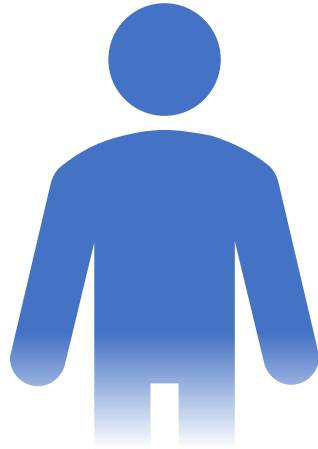
- Vocational Rehabilitation, Training, and Counseling
- Independent living
- Assistive technology



Cross Agency
Desk Aid



Dept of Social
& Health
Services



Transforming lives

- Food, Cash, Medical
- Disability Support
- Adult Care
- Housing Assistance
- Vocational Rehabilitation
- Mental Health and Addiction
- Child Support

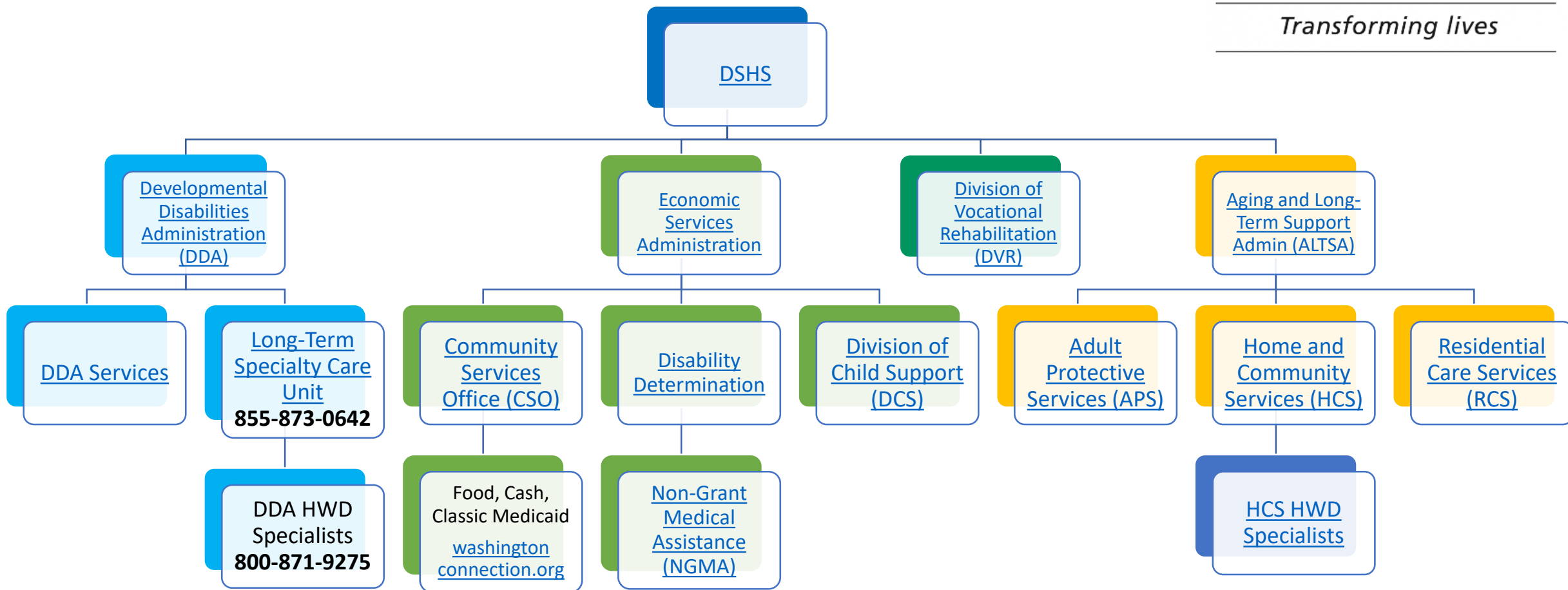


Food Benefits



Cross Agency
Desk Aid





Training Resources

Tools

Cross Agency Desk Aid: <https://www.benefit.u.org/wp-content/uploads/2020/09/Cross-Agency-Desk-Aid-2020.4.29-copy.pdf>

Websites

- Washington State Department of Commerce: <https://www.commerce.wa.gov>
 - **Developmental Disabilities Endowment Trust Fund:** <https://ddetf.wa.gov>
 - **Achieving a Better Life Experience (ABLE):** <https://www.washingtonstateable.com>
 - WorkFirst (TANF): <https://workfirst.wa.gov>
- Employment Security Department: <https://www.esd.wa.gov>
 - **Unemployment:** <https://www.esd.wa.gov/unemployment>
- Labor and Industries: <https://www.lni.wa.gov>
 - Worker's Compensation: <https://lni.wa.gov/claims/for-workers/file-a-claim/>
 - Social Security and L&I offset
 - L&I: https://lni.wa.gov/dA/8806835403/F242-427-000.pdf?language_id=1
 - SSA: https://www.ssa.gov/OP_Home/handbook/handbook.05/handbook-0504.html
 - Minimum wage: <https://lni.wa.gov/workers-rights/wages/minimum-wage/>
 - Equal pay: <https://lni.wa.gov/workers-rights/wages/equal-pay-opportunities-act/>



Training Resources

Websites, continued

- Office of Insurance Commissioner: <https://www.insurance.wa.gov>
 - **SHIBA:** <https://www.insurance.wa.gov/statewide-health-insurance-benefits-advisors-shiba>
 - 2020 Medicare Advantage Plans in WA: <https://www.insurance.wa.gov/2020-medicare-advantage-and-special-needs-plans-snps>
- HealthBenefit Exchange: <https://www.wahbexchange.org>
 - **Healthplan Finder:** https://www.wahealthplanfinder.org/_content/Homepage.html
 - Tribal Health Programs: <https://www.wahbexchange.org/new-customers/who-can-sign-up/tribal-members/>
- Health Care Authority: <https://www.hca.wa.gov>
 - **Apple Health Eligibility Manual:** <https://www.hca.wa.gov/health-care-services-supports/program-administration/apple-health-eligibility-manual>
 - Premium Payment Program: <https://www.hca.wa.gov/health-care-services-supports/program-administration/premium-payment-program>
 - Behavioral Health and Recovery: <https://www.hca.wa.gov/about-hca/behavioral-health-and-recovery-0>
- Department of Services for the Blind: <https://dsb.wa.gov>



Training Resources

Websites, continued

- DSHS
 - **Developmental Disabilities Administration:** <https://www.dshs.wa.gov/dda>
 - DDA Services: <https://www.dshs.wa.gov/dda/developmental-disabilities-administration-services-programs>
 - Long Term Services Care Unit: <https://www.dshs.wa.gov/dda/consumers-and-families/medicaid-coverage>
 - Economic Services Administration: <https://www.dshs.wa.gov/esa>
 - Community Services Office: <https://www.dshs.wa.gov/esa/online-community-services-office-cso>
 - **Washington Connection:** <https://www.washingtonconnection.org/home/>
 - Disability Determination: <https://www.dshs.wa.gov/esa/disability-determination-services>
 - Non-Grant Medical Assistance: <https://www.hca.wa.gov/health-care-services-supports/program-administration/non-grant-medical-assistance-ngma-overview>
 - Division of Child Support: <https://www.dshs.wa.gov/esa/division-child-support>
 - Division of Vocational Rehabilitation: <https://www.dshs.wa.gov/dvr>
 - Aging and Long-Term Support Administration: <https://www.dshs.wa.gov/altsa>
 - Adult Protective Services: <https://www.dshs.wa.gov/altsa/adult-protective-services>
 - Home and Community Services: <https://www.dshs.wa.gov/altsa/home-and-community-services-information-professionals>
 - Home and Community Services HWD Specialists: <https://www.hca.wa.gov/health-care-services-supports/program-administration/apple-health-workers-disabilities>
 - Residential Care Services: <https://www.dshs.wa.gov/altsa/residential-care-services/residential-care-services>



Links to the websites, videos, and tools in this presentation

Videos

- DDETf + ABLE: <https://www.benefitup.org/benefit-planners-network/bn-monthly-trainings/>
- Unemployment and L&I: <https://www.benefitup.org/benefit-planners-network/tier-3-planners-resources/trainings/>
- Food Benefits: <https://www.benefitup.org/benefits-information-for-individuals-and-families/other-benefits/>

