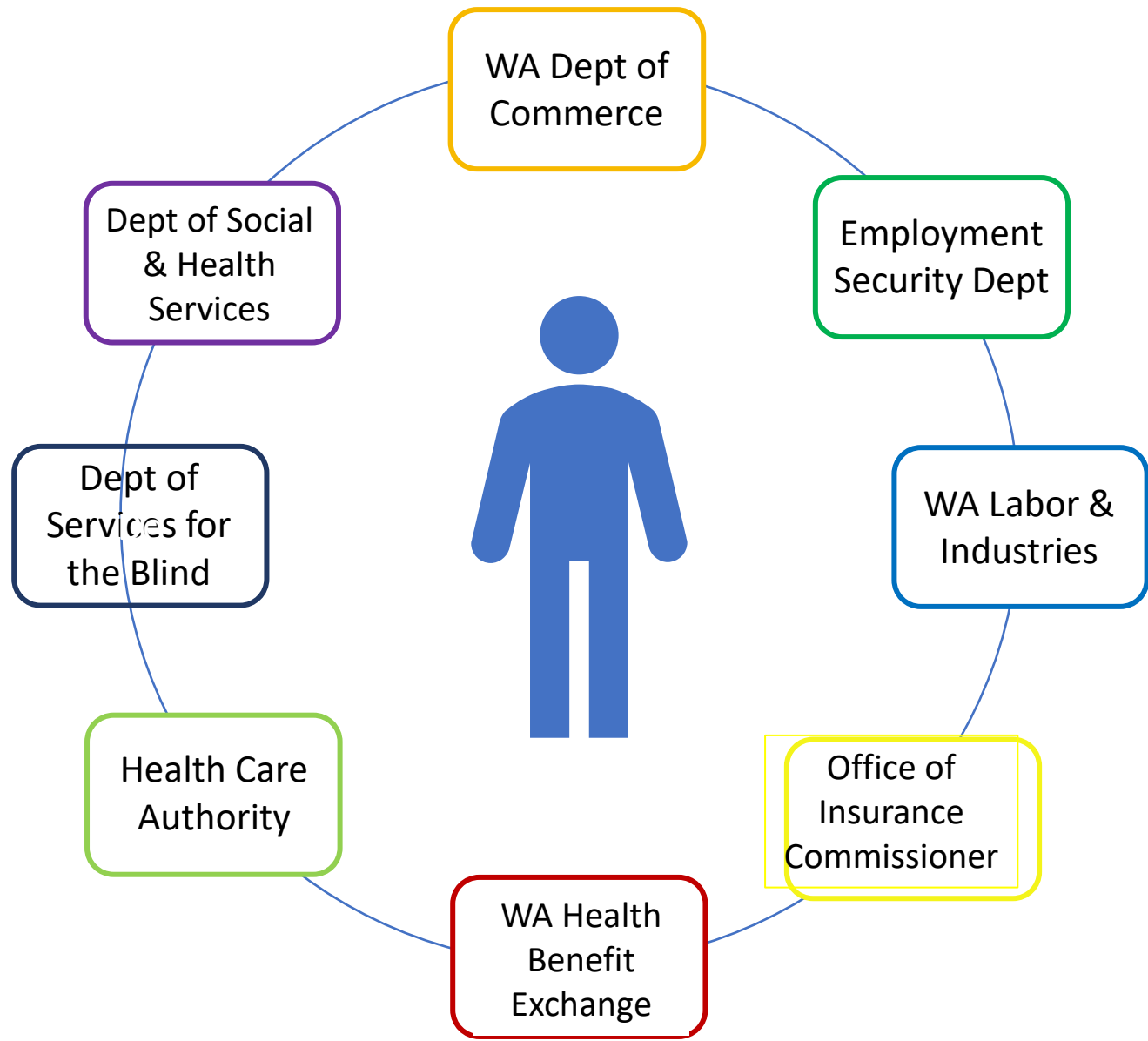



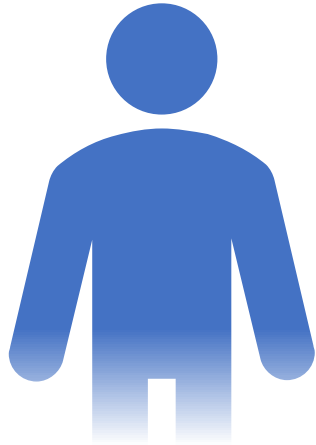
State Systems Overview







WA Dept of
Commerce



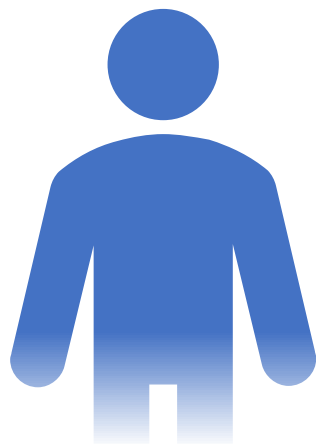
Washington State
Department of
Commerce

Lead state agency focused on enhancing and promoting sustainable community and economic vitality in WA.

- [Developmental Disabilities Endowment Trust Fund](#)
- [Achieving a Better Life Experience \(ABLE\)](#)
- [Housing and Essential Needs \(HEN \\$\)*](#)
- [WorkFirst \(TANF\)](#)

*Dept of Commerce provides the funding and contracts with local entities to administer the program

Employment
Security Dept

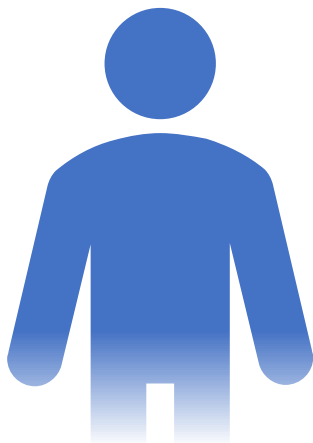


**Employment
Security
Department**
WASHINGTON STATE

- [Unemployment Benefits](#)
- [Paid Family and Medical Leave](#)
- Jobs and Training – [WorkSource](#)
- Labor Market Analysis



WA Labor &
Industries

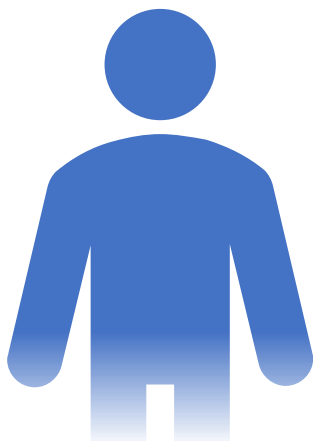


Washington State Department of
Labor & Industries

- Workplace Safety and Health
- [Workers' Compensation Insurance \(L&I\)](#)
SSA Offset Rules. (Worker's Comp is typically reduced with temporary or permanent disability.)
 - [L&I info](#)
 - [SSA info](#)
- Workers Rights
 - [Minimum wage in WA](#)
 - [Equal Pay and Opportunities](#)

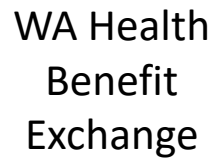


Office of
Insurance
Commissioner

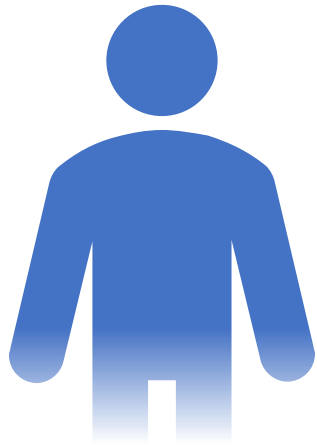


- Insurance requirements and guidance
- Medicare-related support
 - [Statewide Health Insurance Benefit Advisors \(SHIBA\)](#)
 - [Medicare Advantage Plans in WA, by County](#)





WA Health
Benefit
Exchange



Washington Health Benefit Exchange

Powering Washington Health Plan Finder

- [Healthplanfinder](#): Access point for healthcare coverage
 - MAGI
 - Health insurance marketplace
- Navigators
- [Tribal Health Programs](#)





Health Care
Authority

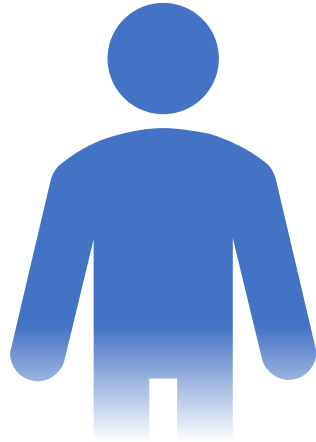
Washington State Health Care Authority

- Medical Oversight
 - Identified State Medicaid Agency
 - Apple Health Coordination
 - [Apple Health Eligibility Manual](#)
- ProviderOne
 - Online payment system for health care providers serving individuals enrolled in Apple Health.
- [Premium Payment Program](#)
- [Behavioral Health and Recovery](#)
- Foster Care

Dept of
Services for
the Blind



Washington State
DEPARTMENT OF SERVICES FOR THE BLIND



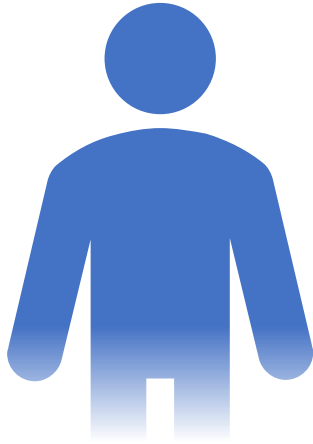
Provides “one front door” for people of all ages who are blind or have low vision in WA.

Services include:

- Vocational Rehabilitation, Training, and Counseling
- Independent living
- Assistive technology



Dept of Social
& Health
Services



- Food, Cash, Medical
- Disability Support
- Adult Care
- Housing Assistance
- Vocational Rehabilitation
- Mental Health and Addiction
- Child Support

